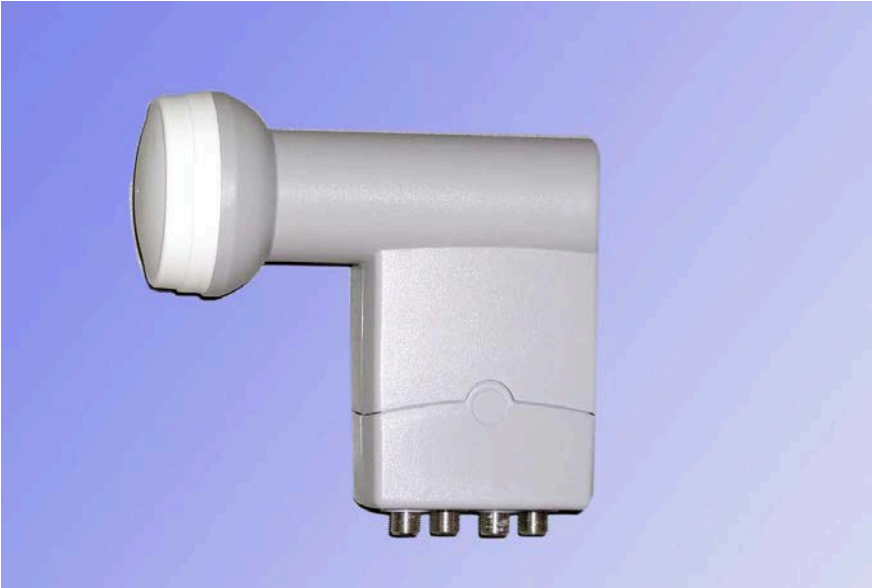


## Quatro LNB

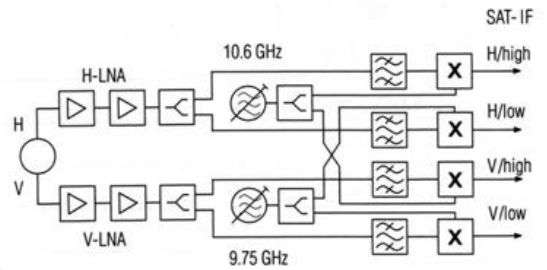


### TCG15AD Quatro LNB

Gain.....60dB  
 Noise Low band......6dB  
 Noise High Band.....1.2dB  
 Output Frequency.....950-2050MHz  
 Switching .....N/A  
 Power Consumption..... 250mA

**TCG15 AD Quatro £16.<sup>90</sup>**

### Circuit of a TCG15 AD



**60CM**

Dish sizes: **50 cm** **60 cm** **75 cm** **90 cm** **120 cm**



### Dish Specification

#### OA36G 60CM

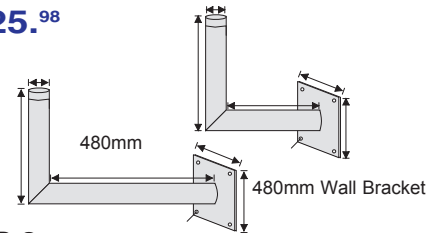
Gain.....35dB  
 Elevation Adjustment.....16-50Deg  
 Clamp size for masts.....32-60mm  
 Wind load up to 20m  
 mounting height.....N280  
 Weight.....1.6Kg

**Price £19.<sup>50</sup>**

#### WB 1

**£25.<sup>98</sup>**

220mm Wall Bracket

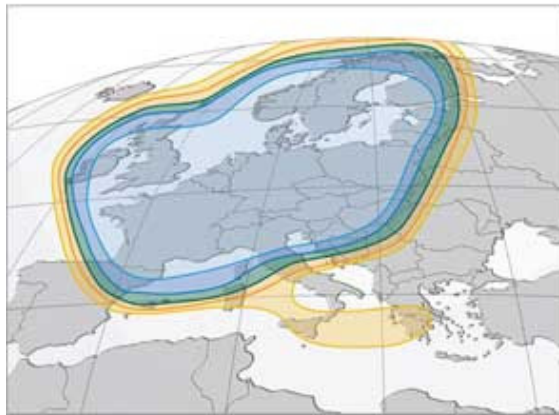


#### WB 2

**£29.<sup>76</sup>**

Astra 2B and 2D have the smallest footprints out of all the Astra transponders beamed towards the UK and Europe.

It can be seen from the illustrated footprint that a 60cm dish provides good reception in the whole of the UK and Ireland.



### Double LNB Mount

Receive from two satellites with 2 LNB'S and one dish.  
 Eutelsat (13<sup>deg</sup> East)  
 Astra19.2<sup>deg</sup>East

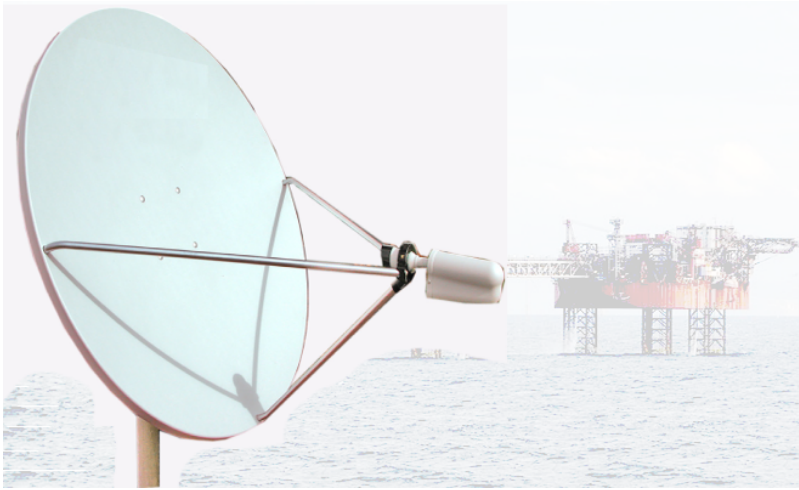
OP O8C



**£10.<sup>70</sup>**

Specifications subject to change

Not included in the main catalogue  
 ,contact sales for pricing and delivery.



Ground Stand. Fully Welded 76mm dia pole.  
 1Mtr High. Including 3 adjustable feet

### RF Performance

	C-band	Ku-band
Effective Aperture	1.2 m (48 in)	1.2 m (48 in)
Operating Frequency	3.4 - 4.8 GHz	10.95 - 12.75 GHz
Polarization	Linear (Circular Optional)	Linear (Circular Optional)
Gain @ 3.95/11.95 GHz	32.0 dBi	42.0 dBi
3 dB Beamwidth	4.4°	1.6°
Antenna Noise Temperature @ 30° Elevation	32° K	24° K
VSWR*	1.3:1	1.4:1
Antenna Cross Polarization	30 dB on Axis (Linear)	30 dB on Axis (Linear)
Feed Interface	CPR-229	WR75 Flat Flange

(All specifications typical)

### Mechanical Performance

Reflector Material		Glass Fiber Reinforced Polyester
Antenna Optics		One-Piece Offset Feed Prime Focus
Mount Type		Elevation over Azimuth
Elevation Adjustment Range		10° - 70° Continuous Fine Adjustment
Azimuth Adjustment Range		360° Continuous
Mast Pipe Interface		73 - 76 mm (2.88 in - 3.00 in) Diameter
Wind Loading	Operational Survival	80 km/h (50 mph) 200 km/h (125 mph)
Temperature		-50°C to 80°C
Humidity		0 to 100% (Condensing)
Atmosphere		Standard Hardware Meets 500 Hour Salt Spray Test Requirements (ASTM B-117)
Solar Radiation		360 BTU/h/ft <sup>2</sup>